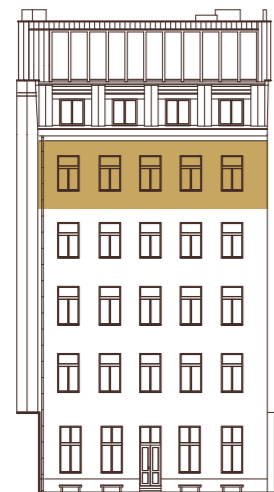


B.5.1



5.NP

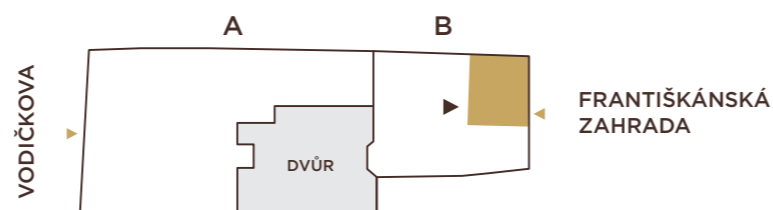
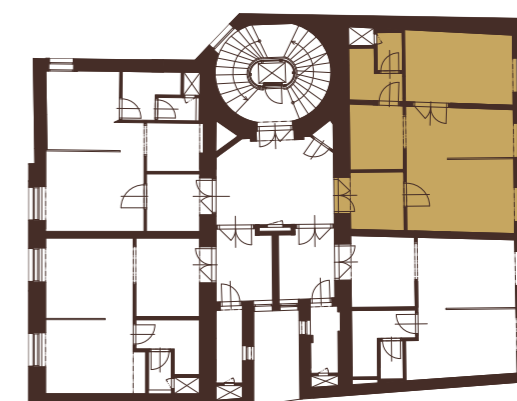
POHLED ZE ZAHRADY



5.NP

2+kk | 52,1 m²

01	předsíň	5,7 m ²
02	obytný prostor	21,9 m ²
03	kuchyňský kout	5,6 m ²
04	pokoj	12,4 m ²
05	koupelna + WC	4,9 m ²
UŽITNÁ PLOCHA		50,5 m²
PODLAHOVÁ PLOCHA		52,1 m²



VODIČKOVA 33